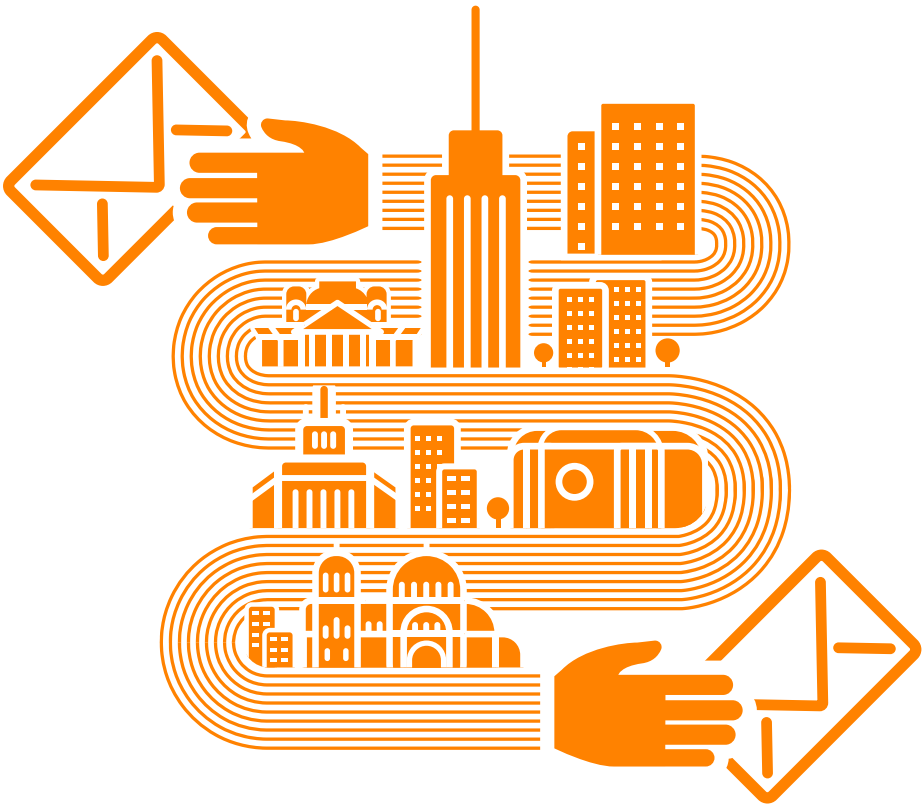




express city delivery



Courier Service Tariff Guide



02 9 12 12

CITY EXPRESS® is a set of same-day parcel delivery services offered by IN TIME OOD.

CITY EXPRESS Service Portfolio

CITY EXPRESS® services are offered for packages sent from and to locations within the administrative borders of the city of Sofia with the exception of the districts of Novi Iskar, Kremikovtsi, Pancharevo and Bankia.

CITY EXPRESS® Main Service Price List

WEIGHT	CITY EXPRESS 90	CITY EXPRESS 180	CITY EXPRESS STANDARD
*LETTER	BGN 21.55	BGN 14.06	BGN 11.58
0.5 – 5 kg	BGN 21.55	BGN 14.06	BGN 11.58
6 – 10 kg	BGN 27.55	BGN 23.66	BGN 18.78
11 – 15 kg	BGN 39.55	BGN 29.66	BGN 25.98
For every additional kilogram	BGN 1.92	BGN 1.62	BGN 1.38

All of the prices listed above are inclusive of VAT.

**LETTER – any shipment containing written correspondence and/or documents that can be placed inside a standard 26 by 34,5-centimeter CITY EXPRESS® service envelope with no weight restrictions.*

CITY EXPRESS 90 is a service suitable for packages that need extremely urgent delivery. Your packages will be delivered at the specified address and signed for by the recipient upon handover. **The service takes 90 minutes** to complete as of signing the shipment document (bill of lading) and the actual acceptance of the package by our courier. The service can be booked till 15:00 hrs.

CITY EXPRESS 180 is a service suitable for packages which need to be delivered urgently. Your packages will be delivered at the specified address and signed for by the recipient upon handover. **The service takes 3 hours** to complete as of signing the shipment document (bill of lading) and the actual acceptance of the package by our courier. The service can be booked by 13:00 hrs.

CITY EXPRESS STANDARD is a service suitable for packages that need same-day delivery. Your package will be delivered at the specified address and signed for by the recipient upon handover. **The service is completed by the end of the same business day** as of signing the shipment document (bill of lading) and the actual acceptance of the package by our courier. The service can be booked by 10:30 hrs.

CITY EXPRESS Additional Services

By sending a package with one of our main **CITY EXPRESS®** services you can benefit from our additional services. For more information on the scope of those services, please call **02 9 12 12** or visit our website at **www.city-express.bg**.

DECLARED VALUE	FEE
Senders shall be allowed to increase the limit of our liability as set in IN TIME OOD's Service User General Terms and Conditions if upon handover of a non-document package they declare a higher package value and pay an additional fee. The declared value of a package cannot exceed BGN 2500 nor can it exceed the actual value of the items included in the package.	0.6 % of the declared value

CASH ON DELIVERY	FEE
<p>Non-document packages are delivered to recipients subject to payment of a certain amount as instructed by the sender.</p> <p>If the on-delivery payment is made by a bank transfer in favour of the sender, the sender will have to provide his banking information to the call center operator when booking a courier. The maximum amount payable per delivery shall be up to BGN 5 000.</p> <p>Payments on delivery shall be remitted to the sender for up to 2 business days as of collecting the amounts from the recipients of the delivery.</p>	0.6 % of the amount collected but no less than BGN 0.60 for amounts paid via bank transfers.

Where on-delivery payments are to be made to the sender in cash, the maximum amount per one delivery shall be BGN 500. On-delivery payments shall be remitted to the sender within 7 business days as of collecting the amounts from the package recipients. The day on which the on-delivery payment has been collected shall not be counted for the purpose of calculating the remittance period above.	A flat fee of BGN 11.58 and a proportional fee of 1.2% of the amount collected shall apply. The total fee for amounts paid in cash shall not be less than BGN 12.78.
---	--

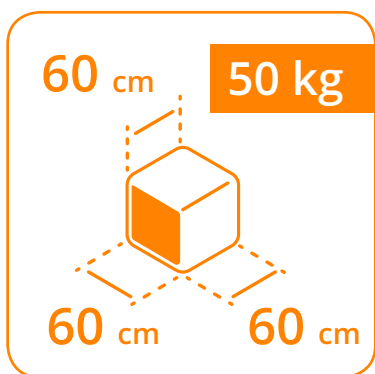
DELIVERY RECEIPT	PRICE
We will send a copy of the delivery receipt to the e-mail address provided by you to certify that your package has been delivered. You will be required to activate this option when booking a courier. This service shall be rendered within 2 business days of delivering your package.	BGN 1.80

All of the prices listed above are inclusive of VAT.



Services can be booked only on business days. Only one attempt delivery will be made on the day when shipment was picked-up. Returning packages to the recipients or second delivery attempts shall be done only subject to payment of a new package delivery fee and only pursuant to an express confirmation by the sender via e-mail or over the telephone.

In case the sender refuses to pay for the package to be returned or for a second delivery attempt to be made, the Sender can pick up his package from our office at 41, Nedelcho Bonchev Str., Iskar District, Sofia free of any additional charges.



WEIGHT AND SIZE RESTRICTIONS

The maximum weight of a shipment shall be 50 kg. No package in a shipment shall exceed the following dimensions:

60 cm in length;

60 cm in width;

60 cm in height;

One shipment can consist of more than one packages provided their total weight does not exceed the maximum permissible weight.



CITY EXPRESS services are part of IN TIME OOD's service family.

